

HILIGHT TRIBE – INTERNATIONAL RIDER 2023

- Updated January 01 / Supersedes any previous version -

This rider is part of the contract. It should be returned and signed with the contract. Failure brought to its application invalidates the contract.

All the detail in this rider may seem restrictive, however, they ensure a quality show in good conditions. In case of problems with this rider, please the production manager.

The promoter agrees to comply strictly and bear all the technical and hospitality conditions requested below. No changes will be without the prior approval of the production manager.

Hilight Tribe is a live music band that requires a concert set up (FOH and MON mixing desks and a light desk).

THANK YOU

Page 1 CONTACT / TOURING PARTY

Page 5 INPUT LIST

Page 2 TOUR REQUIREMENTS

Page 6 STAGE PLOT

Page 3 TECHNICAL SPECIFICATIONS

Page 7 LIGHT REQUIREMENTS

Page 4 SOUND & BACKLINE REQUIREMENTS

Page 11 HOSPITALITY

ALL REQUIREMENTS ARE TO BE PROVIDED BY THE PROMOTER AT NO COST TO THE BAND

Advance / Preproduction - Yohan Progler yohanprogler@gmail.com +33 6 64 31 73 10

8 people on tour with :

ARTISTIC CREW

5 musicians

TECHNICAL CREW

1 Tour Manager / Monitor engineer

1 F.O.H. sound engineer

1 Lighting designer



HILIGHT TRIBE - TOUR REQUIREMENTS

PURCHASER REPRESENTATIVE

An English or French speaking personal representative of the purchaser with decision-making power shall be present and available to assist the tour manager from the arrival to the departure of the band.

VISAS / WORKING PERMITS

The promoter will provide and pay for all visas, work permits, and other documents necessary for the band to undertake the engagement.

FLIGHTS & TRANSFERS

8 return flights from Paris including additional baggage allowance for excess pieces. No low budget Airlines. Booking is to be confirmed before purchase with production manager. Additional baggage allowance should be arranged and paid for each travel at tickets purchase.

The band needs to be at the airport at least 2h30 before flight departure.

The band travels with 16 checked baggage + 8 cabin luggage

English or French speaking drivers who have a good local knowledge. Internal transport (airport / hotel / venue) should be available for the duration of the stay and be spacious enough for 8 + drivers and luggage / backline.

ACCOMMODATION (From band arrival to band departure)

8 single rooms at a minimum 3 Star hotel, close to the venue
8 breakfasts + 8 lunches + 8 dinners per day

RECORDING

The promoter agrees that no part of the band's performance shall be broadcasted, filmed, videotaped, televised, photographed or otherwise reproduced in any manner, audio or visually without the express written consent of the band, which must be obtained at least 2 weeks prior the engagement.

INSURANCE

It is agreed that the promoter is responsible for all insurance in respect of equipment and personal accident, including loss, damage, medical expenses and public liability for the entire party throughout the entire period of engagement.

The Promoter agrees and accepts that they will indemnify the band and all representatives and employees against all claims relating to damage or personal injury unless said injury or damage was caused directly by the actions or negligence of the band, its representatives or employees.

The band shall have no liability if it is determined in good faith that the performance is (or is likely to be) rendered impossible, hazardous or is otherwise prevented or impaired due to inclement weather. In such event the Promoter shall remain liable for the full contracted fee.

PLEASE SEND TO PRODUCTION MANAGER DETAILS OF FLIGHTS AND ACCOMMODATION AS WELL AS COMPLETE TECHNICAL SPECIFICATIONS (SOUND, LIGHTS, BACKLINE) AND ITINERARY SHEET AT LEAST 1 MONTH BEFORE SHOW DAY

HILIGHT TRIBE - TECHNICAL SPECIFICATIONS

Hilight Tribe is a live music band that requires a concert set up (FOH and MON mixing desks and a light desk) to ensure a quality show.

Sound systems, lights and backline should be set up in working condition before the band arrives. FOH mixing desk and light desk have to be at the floor, secured and centred, facing the stage.

STAGE

The stage shall have two sets of sturdy, solid, illuminated stairs (stage left and right).
The stairs must be secured to the stage with banisters on both sides of each set.
The stage must be covered on outdoor shows, including monitor mix area and front of house.
The stage must be clean and clear of all stage props and obstacles on.
Tour manager must have complete control over the stage and house lighting for the duration of the band's sound check and performance. The time and completion of the performance is to be decided with the said tour manager.

POWER

Must be stabilized at 220v / 50 cycles for all HILIGHT TRIBE backline. In case of local voltage at 110v, Promoter agrees to provide and pay for 7 transformers 110v / 220v / 16 amps (2 located at mixing desks and 5 on the stage), with 2 sets of 4 French plug each.
Sound and Light shall be connected to 2 different sources.
The PA should be isolated from all other sources. It must be completely grounded.
ALL AC MUST HAVE ZERO (0) POTENTIAL BETWEEN GROUND AND NEUTRAL.

COMMUNICATIONS

2 way communications between F.O.H. & monitor desk

PERSONNEL

1 backliner
1 electrician familiar with the venue's power supplies
3 qualified sound technicians, experienced with all aspects of the sound system, monitors and stage
1 qualified light technician, experienced with all aspects of lights system

BARRICADE

One sturdy professional quality barricade erected securely in front of the stage, the sound wings and around the FOH lighting and mixing desk position.

SECURITY

The promoter shall at his own expense employ an adequate number of security guards; they shall protect the band and its crew and their properties during and after the performance. Particularly, security must be provided in the areas of the dressing room and the stage. Security protection shall start upon the arrival of the band equipment at the venue.

BACKSTAGE ACCESS

NO person shall be allowed on stage or backstage unless his/her presence is essential to the performance and permission has been obtained from the band tour manager. Tour manager will brief security chief, and stage security on requirement before doors are to be opened.

PASSES

The promoter will issue all the necessary passes for all HILIGHT TRIBE production staff. 8 passes are required.

VENUE CAMERAS

The promoter further guarantees that all arrangements for filming are agreed with the tour manager prior to show day. Photographers are allowed to only photograph (without flash) from the pit.

HILIGHT TRIBE - SOUND & BACKLINE REQUIREMENTS

Hilight Tribe is a live music band that requires a concert set up (FOH and MON mixing desks and a light desk) to ensure a quality show.

FRONT OF HOUSE

Professional FOH sound system (type D&B, L Acoustics) adapted to the venue, with Subwoofers (required) controlled from the FOH mixing desk. FOH mixing desk have to be at the floor, secured and centred, **facing the stage**.

- 1 professional mixing desk (Yamaha CL5, Rivage / Soundcraft VI / Midas / Digico / A&H D-Live)
- 1 EQ 2x31 bands Klark Teknik
- 10 channels of compression (Drawmer / Dbx)
- 3 channels of compression + gate (Drawmer / Dbx)
- 4 channels of gate (Drawmer)
- 4 effects units (Lexicon Pcm / Spx 990 / M-One / D-Two)

MONITORS - NO MONITOR DESK RISKS NO SHOW

- 1 40 channels active splitter - **No gain sharing with FOH desk**
- 1 professional mixing desk (Yamaha CL5, CL3, QL5, Rivage / Soundcraft VI / Midas / Digico / A&H D-Live) **on stage**
- 8 professional monitors, PFL included (115 HiQ / Max 15 / PMX15 / M15 / M4...) with adapted amplification
- Provide 2 XLR lines (aux 6 & 9 outputs) for 2 wired IEM (supplied) for drummer and bass player
- Thanks to provide 2 wireless IEM systems (shure PSM 900 / 1000 or Sennheiser equivalent) for aux. 7 & 8 outputs
- We bring our own headphones

STAGE

- Drum Riser (3m x 2m x 0,4 m)
- 7 POWER SOCKETS 220 V / FRENCH PLUGS + 2 FRENCH PLUGS AT MIXING DESKS
- Please refer to the input list (page 5) for the Mics Request, no adaptation without discussion

BACKLINE FOR HIRE

DRUM KIT (it's very important to respect the size of each element)

- 1 professional Drum kit (Yamaha Stage Custom, pearl, Ludwig, DW)
- 1 13" x 6" Snare drum (Ludwig black beauty first choice)
- 1 22" Kick Drum
- 1 10" x 7" Rack tom
- 1 12" x 8" Rack tom
- 1 14" x 14" or 16" x 18" Floor Tom
- 1 selection of Zildjian cymbals (3 crashes with 14", 16", 18" – 1 splash - 1 Hi-hat 13" or 14")
- 1 Hi-hat stand
- 5 boom cymbal stands
- 1 snare stand
- 1 drum carpet (2 m x 2m)
- 1 high quality drum thrones (NO Motorcycle Style)

BASS

- 1 professional 5 strings **active** bass – **Music Man Stingray**
- 1 bass stand Hercules or equivalent

GUITAR

- 1 GUITAR RACK STAND FOR MINIMUM 5 guitars
- 2 guitars stand Hercules or equivalent
- 1 Keyboard amp. Laney/Gallien Krueger/Hartke/Trace Elliot (**NO LAMP amp.**)
- 1 14" snare with a **high** snare stand
- 1 Tumba or Conga with stand

PERCUSSIONS

- 1 pair of bongos - with stand
- 1 complete set congas LP (11" Quinto - 11" 3/4 Conga - 12" 1/2 Tumba) - with stands
- 1 pair of timbales - with stand
- 2 darbooka with stands
- 1 Djembe with stand

INPUT LIST - HILIGHT TRIBE :

		LABEL	MIC	INSERT	STAND
DRUM KIT	1	D-DRUM KICK	DI BSS AR133 PAD -20DB	COMP + GATE	
	2	D-DRUM SNARE	DI BSS AR133 PAD -20DB	COMP + GATE	
	3	HH	AKG C451 /535		MEDIUM
	4	RACK TOM 1	E604	GATE	
	5	RACK TOM 2	E604	GATE	
	6	FLOOR TOM	E604	GATE	
	7	OH 1	KM184 / SM81		TALL
	8	OH 2	KM184 / SM81		TALL
	9	D-DRUM FX 1	DI BSS AR133 PAD -20DB		
	10	D-DRUM FX 2	DI BSS AR133 PAD -20DB		
	11	D-DRUM FX 3	DI BSS AR133 PAD -20DB		
	12	D-DRUM FX 4	DI BSS AR133 PAD -20DB		
GUITAR	13	DJEMBE/SNARE/TOMS	2 x E604	COMP	MEDIUM
	14	TAMBOUR H.F.	WIRELESS SHURE BÉTA 98 H/C		
	15	CONGA	E604		
	16	TÉRÉMIN	PASSIVE DI PROVIDED	COMP	DROIT EMB. RONDE
	17	GUITAR DI	DI BSS AR133 PAD -20DB	COMP	
	18	GUITAR AMP	E609		
	19	DIDGERIDOO / KAOSS PAD	DI BSS AR133 (NO PAD)	COMP	
	20				
	21	GTR VOX	SM58 + 2 XLR (3M)	COMP	TALL
BASS	22	BASS DI	DI BSS AR133 PAD (NO PAD)	COMP	
PERC. 1	23	PERC VOX	2 XLR (3M)	COMP	TALL
	24	PERC VOX FX	BÉTA57A + 2 XLR (3M)	COMP	TALL (X2)
	25	DJEMBE (LEAD)	E604 (NO CLAMP)	COMP	TALL
	26	DJEMBE FX	2 XLR (3M)		
	27	BOOGARABOO	MD421		TALL
	28	DARBOOKA	SM58	COMP	TALL
	29	TIMBALES / TABLAS	SM57		TALL
	30	DIDGERIDOO	PROVIDED		
	31	DAF	WIRELESS SHURE BÉTA 98 H/C		
	32	GUITAR SYNTH	DI BSS AR133 (NO PAD)		
PERC. 2	33	DARBOOKA	SM58	COMP	TALL
	34	FLYING CONGA	BETA98 AD/C + A98D		
	35	CONGA	BETA98 AD/C + A98D		
	36	TUMBA	SM57		TALL
	37	PERCUS FX L	DI BSS AR133 PAD (NO PAD)		
	38	PERCUS FX R	DI BSS AR133 PAD (NO PAD)		
	39	BONGOS	SM57		TALL

STAGE PLOT - HILIGHT TRIBE :

HILIGHT TRIBE			
01.KICK - DI BSS 02.SNARE - DI BSS 03.HI HAT - C451/ 535 04.RACK TOM 1 - e604 05.RACK TOM 2 - e604 06.FLOOR TOM - e604 07.OH 1 - KM184 / SM81 08.OH 2 - KM184 / SM81	09.DDRUM 1 - DI BSS 10.DDRUM 2 - DI BSS 11.DDRUM 3 - DI BSS 12.DDRUM 4 - DI BSS 13.DJEMB/SN/TOMS - 2xe604 14.TAMB H.F. (provided) 15.CONGA - e604	16.THEREMIN - XLR 17.GTR DI - DI BSS 18.GTR AMP - e609 19.DIDGERIDOO/KAOSS - XLR 20. 21.GTR VOX - SM58 22.BASS DI - DI BSS 23.PERC VOX - (provided)	24.PERC VOX FX - BETA57a 25.DJMBE (LEAD) - e604 26.DJMBE FX - 2 XLR 27.BOOGARABOO - MD421 28.DARBUKA - SM58 29.TIMBALES/TABLAS - SM57 30.DIDGERIDOO - (provided) 31.DAF H.F. (provided)
32.GUIT SYNTH - DI BSS 33.DARBUKA - SM58 34.CONGA - BETA 98 35.QUINTO - BETA 98 36.TUMBA - SM57 37.PERC FX L- DI BSS + SM58 38.PERC FX R-DI BSS 39.BONGOS - SM57			

LIGHT REQUIREMENTS– HILIGHT TRIBE :

CONTROL DESKS

1 Full Grand MA 2 or Grand Ma 3 (or Light + Fader wing)

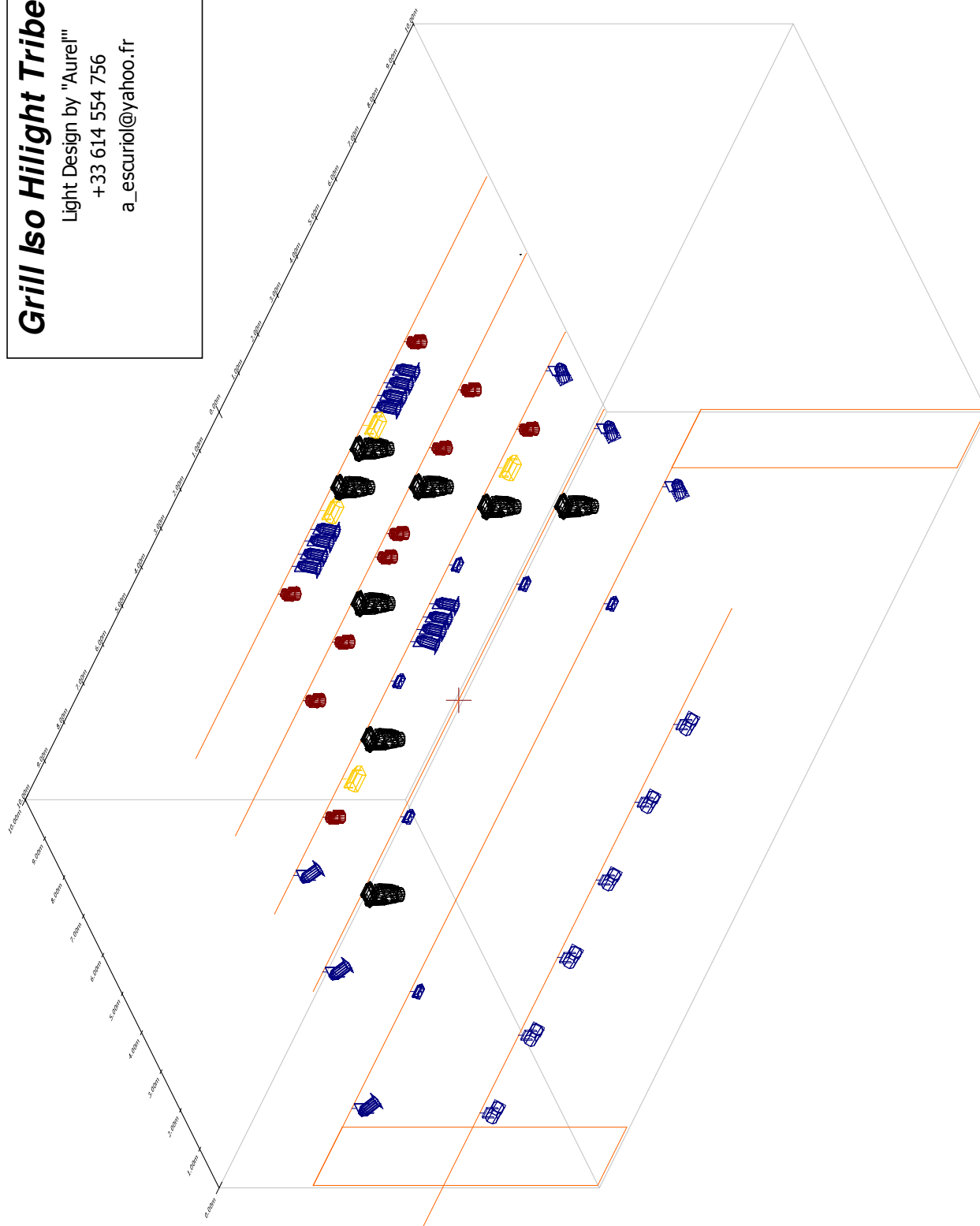
Lighting desk must be at the floor, secured and centred, **facing the stage**

Grill Iso Hilight Tribe 2022

Light Design by "Aurel"

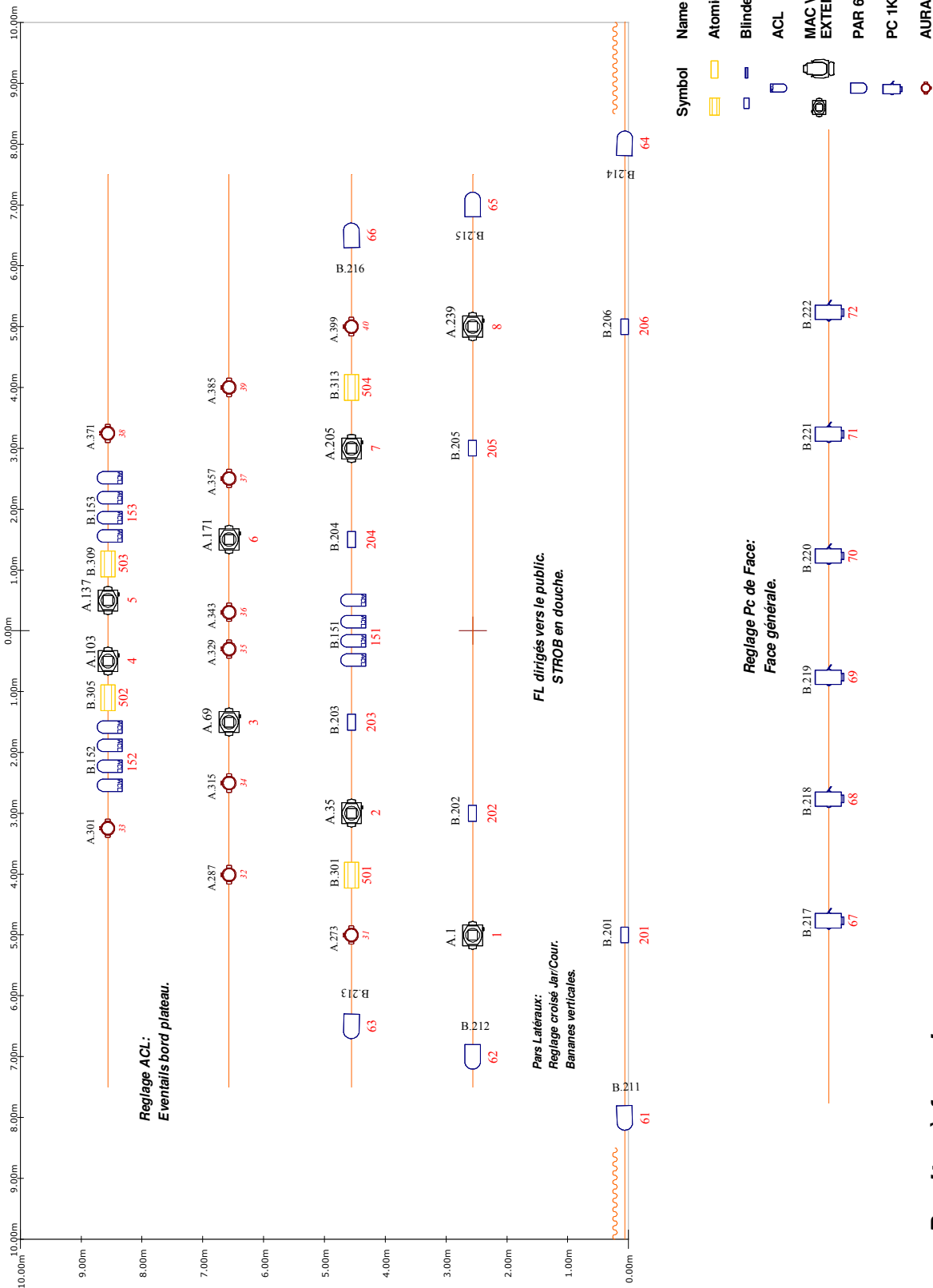
+33 614 554 756

a_escuriol@yahoo.fr



Grill Hilight Tribe 2022

Light Design by "Aurel"
+33 614 554 756
a_escuriol@yahoo.fr



Pupitre à fournir:

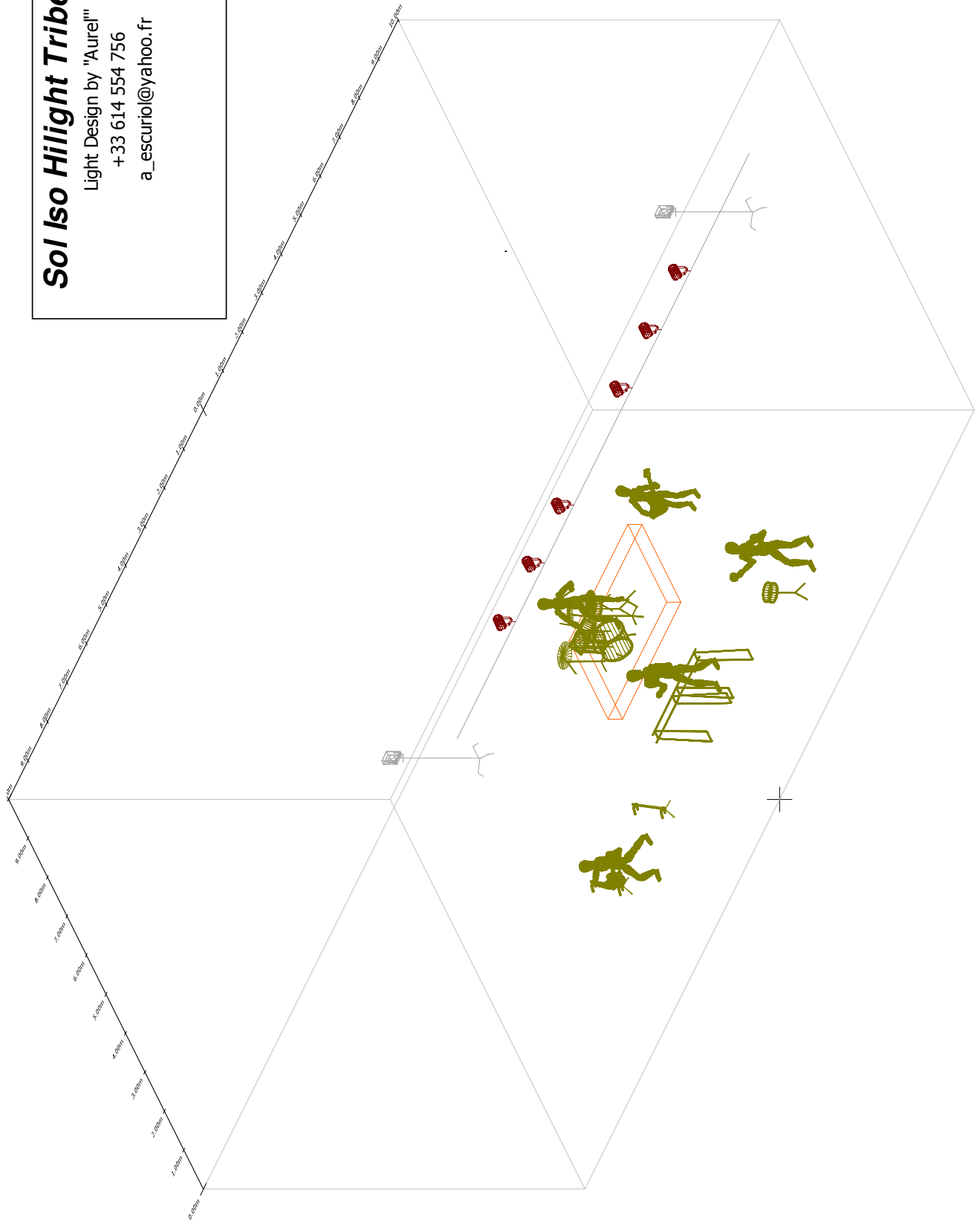
Grand MA2 ou MA3 version Light Minimum.

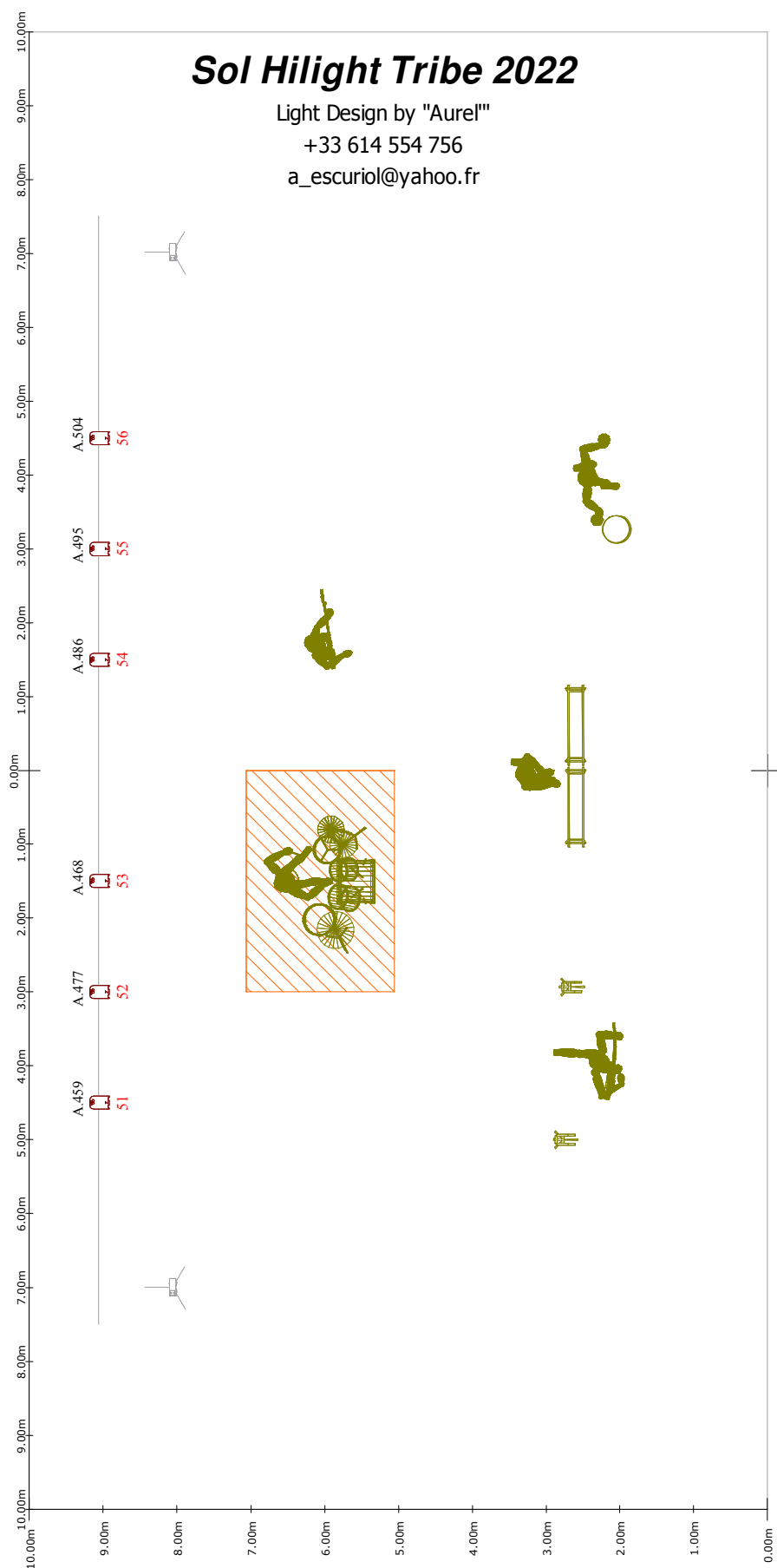
Sol Iso Hilight Tribe 2022

Light Design by "Aurel"

+33 614 554 756

a_escuriol@yahoo.fr





Symbol	Name	Count
	Rush PAR 2 RGBW Zoom	6
	Molefay Four Light	2

HILIGHT TRIBE - HOSPITALITY

DRESSING ROOM

A lockable, quiet and comfortable room exclusively reserved for Hilight Tribe.

CATERING

A cold vegetarian catering (bread / butter / cheese / vegetables)	3 large bottles of still water
1 tray of organics fresh and dry fruits	2 sugarfree Reb Bull
1 bottle of red wine	3 large soda bottles fresh (Coca + Coca Zero + Ice tea)
Coffee / tea	2 litres of Coconut Water
6 cooled Corona	6 cooled local beer
2 bottles of organic fruit juice (Orange + Apple)	6 cooled 1664
	2 litres of plant Milk

MEALS

Important: 6 crew members are vegetarians and do not eat egg neither fish (dairy required).

8 qualitative, balanced, hot and complete meals (starter, hot dish, dessert) :

7 meals three hours before the performance (including the 6 vegetarians) + 1 meal after the performance

Also provide 8 sandwiches after the performance (including 6 vegetarians without eggs)

STAGE

12 small bottles of water, **2 cans of Coconut Water, 3 Gatorade or Powerade (no Red Bull)**
and 6 clean towels (medium size)

ACCOMMODATION

At a minimum 3 Star hotel, close to the venue :

8 single rooms Breakfast and WIFI included

8 breakfasts + 8 lunches + 8 dinners per day