

HILIGHT TRIBE – INTERNATIONAL RIDER 2023

ROAD VERSION (2 Vans – 10 people)

- Updated January 01 / Supersedes any previous version -

This rider is part of the contract. It should be returned and signed with the contract. Failure brought to its application invalidates the contract.

All the detail in this rider may seem restrictive, however, they ensure a quality show in good conditions. In case of problems with this rider, please contact the production manager.

The promoter agrees to comply strictly and bear all the technical and hospitality conditions requested below. No changes will be without the prior approval of the production manager.

Hilight Tribe is a live music band that requires a concert set up (FOH and MON mixing desks and a light desk).

THANK YOU

Page 1 CONTACT / TOURING PARTY

Page 5 INPUT LIST

Page 2 TOUR REQUIREMENTS

Page 6 STAGE PLOT

Page 3 TECHNICAL SPECIFICATIONS

Page 7 LIGHT REQUIREMENTS

Page 4 SOUND & STAGE REQUIREMENTS

Page 11 HOSPITALITY

ALL REQUIREMENTS ARE TO BE PROVIDED BY THE PROMOTER AT NO COST TO THE BAND

Advance / Preproduction - Yohan Progler yohanprogler@gmail.com +33 6 64 31 73 10

10 people on tour with :

ARTISTIC CREW

5 musicians

TECHNICAL CREW

1 Tour Manager / Monitor engineer

1 F.O.H. sound engineer

1 Lighting designer

1 Backliner

1 Merchandising manager



HILIGHT TRIBE - TOUR REQUIREMENTS

TOURING

10 people on road

1 van artists and tech crew - Mercedes Sprinter type (L = 7,00 m x l = 2m x h = 3 m)

1 van Backline / Merchandising - Fiat Ducato type (L = 7,00 m x l = 2m x h = 3 m)

PURCHASER REPRESENTATIVE

An English or French speaking personal representative of the purchaser with decision-making power shall be present and available to assist the tour manager from the arrival to the departure of the band.

VISAS / WORKING PERMITS

The promoter will provide and pay for all visas, work permits, and other documents necessary for the band to undertake the engagement.

ACCOMMODATION (From band arrival to band departure)

10 single rooms at a minimum 3 Star hotel, close to the venue

10 breakfasts + 10 lunches + 10 dinners per day

RECORDING

The promoter agrees that no part of the band's performance shall be broadcasted, filmed, videotaped, televised, photographed or otherwise reproduced in any manner, audio or visually without the express written consent of the band, which must be obtained at least 2 weeks prior the engagement.

INSURANCE

It is agreed that the promoter is responsible for all insurance in respect of equipment and personal accident, including loss, damage, medical expenses and public liability for the entire party throughout the entire period of engagement.

The Promoter agrees and accepts that they will indemnify the band and all representatives and employees against all claims relating to damage or personal injury unless said injury or damage was caused directly by the actions or negligence of the band, its representatives or employees.

The band shall have no liability if it is determined in good faith that the performance is (or is likely to be) rendered impossible, hazardous or is otherwise prevented or impaired due to inclement weather. In such event the Promoter shall remain liable for the full contracted fee.

PLEASE SEND TO PRODUCTION MANAGER DETAILS OF FLIGHTS AND ACCOMMODATION AS WELL AS COMPLETE TECHNICAL SPECIFICATIONS (SOUND, LIGHTS, BACKLINE) AND ITINERARY SHEET AT LEAST 1 MONTH BEFORE SHOW DAY

HILIGHT TRIBE - TECHNICAL SPECIFICATIONS

Hiligh Tribe is a live music band that requires a concert set up (FOH and MON mixing desks and a light desk) to ensure a quality show.

Sound systems, lights and backline should be set up in working condition before the band arrives. FOH mixing desk and light desk have to be at the floor, secured and centred, facing the stage.

STAGE

The stage shall have two sets of sturdy, solid, illuminated stairs (stage left and right).
The stairs must be secured to the stage with banisters on both sides of each set.
The stage must be covered on outdoor shows, including monitor mix area and front of house.
The stage must be clean and clear of all stage props and obstacles on.
Tour manager must have complete control over the stage and house lighting for the duration of the band's sound check and performance. The time and completion of the performance is to be decided with the said tour manager.

POWER

Must be stabilized at 220v / 50 cycles for all HILIGHT TRIBE backline. In case of local voltage at 110v, Promoter agrees to provide and pay for 7 transformers 110v / 220v / 16 amps (2 located at mixing desks and 5 on the stage), with 2 sets of 4 French plug each.
Sound and Light shall be connected to 2 different sources.
The PA should be isolated from all other sources. It must be completely grounded.
ALL AC MUST HAVE ZERO (0) POTENTIAL BETWEEN GROUND AND NEUTRAL.

COMMUNICATIONS

2 way communications between F.O.H. & monitor desk

PERSONNEL

1 backliner
1 electrician familiar with the venue's power supplies
3 qualified sound technicians, experienced with all aspects of the sound system, monitors and stage
1 qualified light technician, experienced with all aspects of lights system

BARRICADE

One sturdy professional quality barricade erected securely in front of the stage, the sound wings and around the FOH lighting and mixing desk position.

SECURITY

The promoter shall at his own expense employ an adequate number of security guards; they shall protect the band and its crew and their properties during and after the performance. Particularly, security must be provided in the areas of the dressing room and the stage. Security protection shall start upon the arrival of the band equipment at the venue.

BACKSTAGE ACCESS

NO person shall be allowed on stage or backstage unless his/her presence is essential to the performance and permission has been obtained from the band tour manager. Tour manager will brief security chief, and stage security on requirement before doors are to be opened.



PASSES

The promoter will issue all the necessary passes for all HIGHLIGHT TRIBE production staff. 8 passes are required.

VENUE CAMERAS

The promoter further guarantees that all arrangements for filming are agreed with the tour manager prior to show day. Photographers are allowed to only photograph (without flash) from the pit.

HIGHLIGHT TRIBE - SOUND & STAGE REQUIREMENTS

FRONT OF HOUSE

Professional FOH sound system (type D&B, L Acoustics) adapted to the venue, with Subwoofers (required) controlled from the FOH mixing desk. FOH mixing desk have to be at the floor, secured and centred, **facing the stage**.

1 professional mixing desk (Yamaha CL5, Rivage / Soundcraft VI / Midas / Digico / A&H D-Live)
1 EQ 2x31 bands Klark Teknik
10 channels of compression (Drawmer / Dbx)
3 channels of compression + gate (Drawmer / Dbx)
4 channels of gate (Drawmer)
4 effects units (Lexicon Pcm / Spx 990 / M-One / D-Two)

MONITORS - NO MONITOR DESK RISKS NO SHOW

1 40 channels active splitter - **No gain sharing with FOH desk**
1 professional mixing desk (Yamaha CL5, CL3, QL5, Rivage / Soundcraft VI / Midas / Digico / A&H D-Live) **on stage**
8 professional monitors, PFL included (115 HiQ / Max 15 / PMX15 / M15 / M4...) with adapted amplifiers
Provide 2 XLR lines (aux 6 & 9 outputs) for 2 wired IEM (supplied) for drummer and bass player
Thanks to provide 2 wireless IEM systems (shure PSM 900 / 1000 or Sennheiser equivalent) for aux. 7 & 8 outputs.
We bring our own headphones

STAGE

Drum Riser (3m x 2m x 0,4 m)
7 POWER SOCKETS 220 V / FRENCH PLUGS + 2 FRENCH PLUGS AT MIXING DESKS
Please refer to the input list (page 5) for the Mics Request, no adaptation without discussion

BACKDROP

1 backdrop 2m x 2m (provided by the band)



CERTIFICATE

CENTEXBEL TYPE TESTING | TEST REPORT N° 17.00647
According to reports N° 17.00647.01 and 17.00647.02, dated on 16/02/2017, we confirm that the below mentioned items were tested at CENTEXBEL with reference to NF P 92-507 (2004) "Fire safety - Building - Interior fitting materials - Classification according to their reaction to fire".

The items show

Classification M1

When properly applied.

The evaluation of the burning behaviour is based on CENTEXBEL's evaluation scheme.

SAMPLES Advertising warp-knitted fabric AN/B/WPL D/OG
Weight range from 95 g/m² (±3 g/m²) to 155 g/m² (±9 g/m²)

Company Miranda sp z o o
Jedwabnicza 1
PL-62700 TUREK
POLAND

This Certificate is valid until 15/02/2022

Centexbel | Technologiepark 7 | BE 3052 Genk | Belgium, 9/02/2017

Stijn Devoere, PhD
Director Services

Certificate

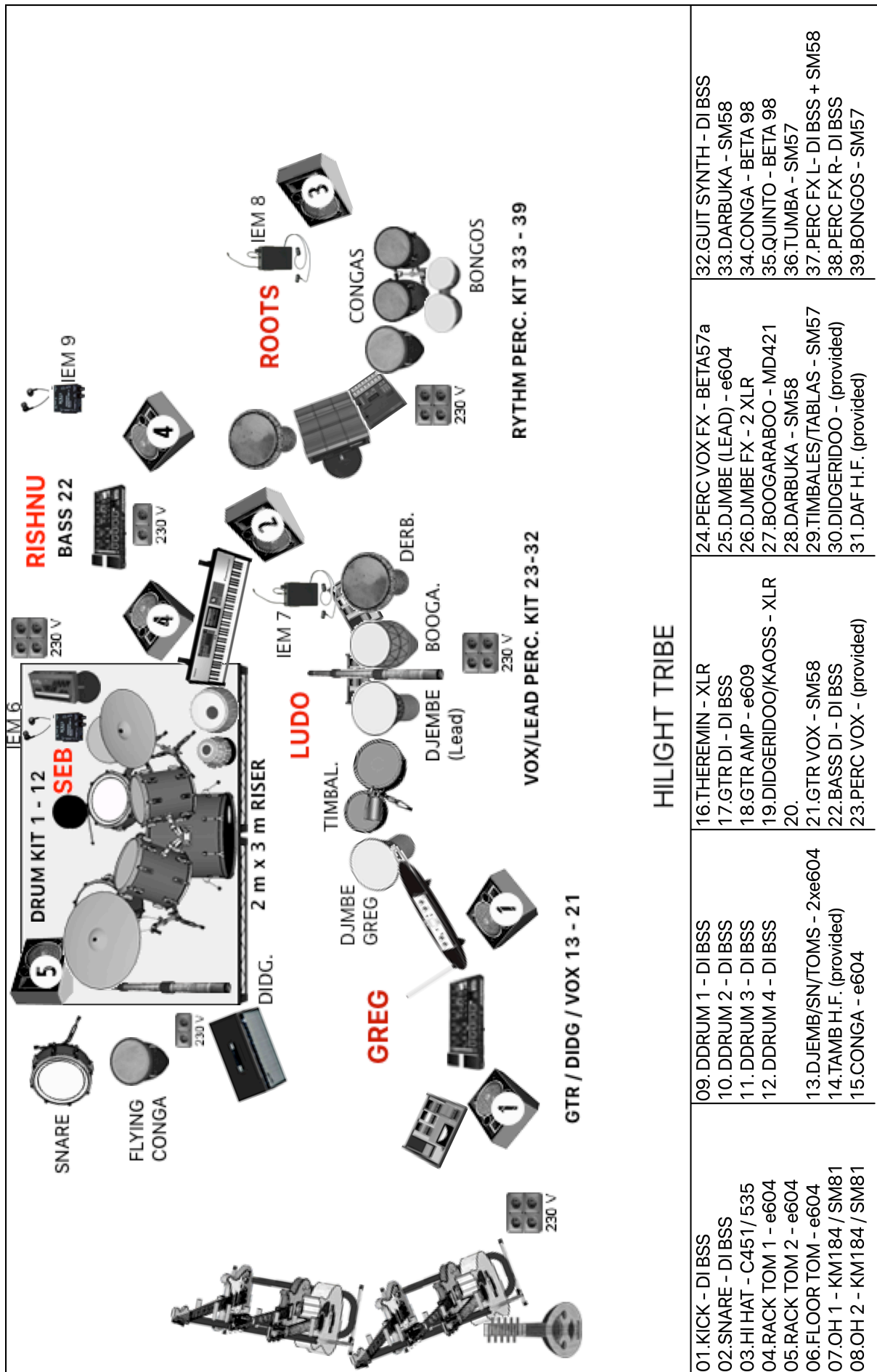
INPUT LIST - HILIGHT TRIBE :

| | | LABEL | MIC | INSERT | STAND |
|----------|----|------------------------|----------------------------|-------------|------------------|
| DRUM KIT | 1 | D-DRUM KICK | DI BSS AR133 PAD -20DB | COMP + GATE | |
| | 2 | D-DRUM SNARE | DI BSS AR133 PAD -20DB | COMP + GATE | |
| | 3 | HH | AKG C451 /535 | | MEDIUM |
| | 4 | RACK TOM 1 | E604 | GATE | |
| | 5 | RACK TOM 2 | E604 | GATE | |
| | 6 | FLOOR TOM | E604 | GATE | |
| | 7 | OH 1 | KM184 / SM81 | | TALL |
| | 8 | OH 2 | KM184 / SM81 | | TALL |
| | 9 | D-DRUM FX 1 | DI BSS AR133 PAD -20DB | | |
| | 10 | D-DRUM FX 2 | DI BSS AR133 PAD -20DB | | |
| | 11 | D-DRUM FX 3 | DI BSS AR133 PAD -20DB | | |
| | 12 | D-DRUM FX 4 | DI BSS AR133 PAD -20DB | | |
| GUITAR | 13 | DJEMBE/SNARE/TOMS | 2 x E604 | COMP | MEDIUM |
| | 14 | TAMBOUR H.F. | WIRELESS SHURE BÉTA 98 H/C | | |
| | 15 | CONGA | E604 | | |
| | 16 | TÉRÉMIN | PASSIVE DI PROVIDED | COMP | DROIT EMB. RONDE |
| | 17 | GUITAR DI | DI BSS AR133 PAD -20DB | COMP | |
| | 18 | GUITAR AMP | E609 | | |
| | 19 | DIDGERIDOO / KAOSS PAD | DI BSS AR133 (NO PAD) | COMP | |
| | 20 | | | | |
| | 21 | GTR VOX | SM58 + 2 XLR (3M) | COMP | TALL |
| BASS | 22 | BASS DI | DI BSS AR133 PAD (NO PAD) | COMP | |



| | | | | | |
|---------|----|-------------------|----------------------------|------|-----------|
| PERC. 1 | 23 | PERC VOX | 2 XLR (3M) | COMP | TALL |
| | 24 | PERC VOX FX | BÉTA57A + 2 XLR (3M) | COMP | TALL (x2) |
| | 25 | DJEMBE (LEAD) | E604 (NO CLAMP) | COMP | TALL |
| | 26 | DJEMBE FX | 2 XLR (3M) | | |
| | 27 | BOOGARABOO | MD421 | | TALL |
| | 28 | DARBOOKA | SM58 | COMP | TALL |
| | 29 | TIMBALES / TABLAS | SM57 | | TALL |
| | 30 | DIDGERIDOO | PROVIDED | | |
| | 31 | DAF | WIRELESS SHURE BÉTA 98 H/C | | |
| | 32 | GUITAR SYNTH | DI BSS AR133 (NO PAD) | | |
| PERC. 2 | 33 | DARBOOKA | SM58 | COMP | TALL |
| | 34 | FLYING CONGA | BETA98 AD/C + A98D | | |
| | 35 | CONGA | BETA98 AD/C + A98D | | |
| | 36 | TUMBA | SM57 | | TALL |
| | 37 | PERCUS FX L | DI BSS AR133 PAD (NO PAD) | | |
| | 38 | PERCUS FX R | DI BSS AR133 PAD (NO PAD) | | |
| | 39 | BONGOS | SM57 | | TALL |

STAGE PLOT – HILIGHT TRIBE :



LIGHT REQUIREMENTS- HILIGHT TRIBE :

CONTROL DESKS

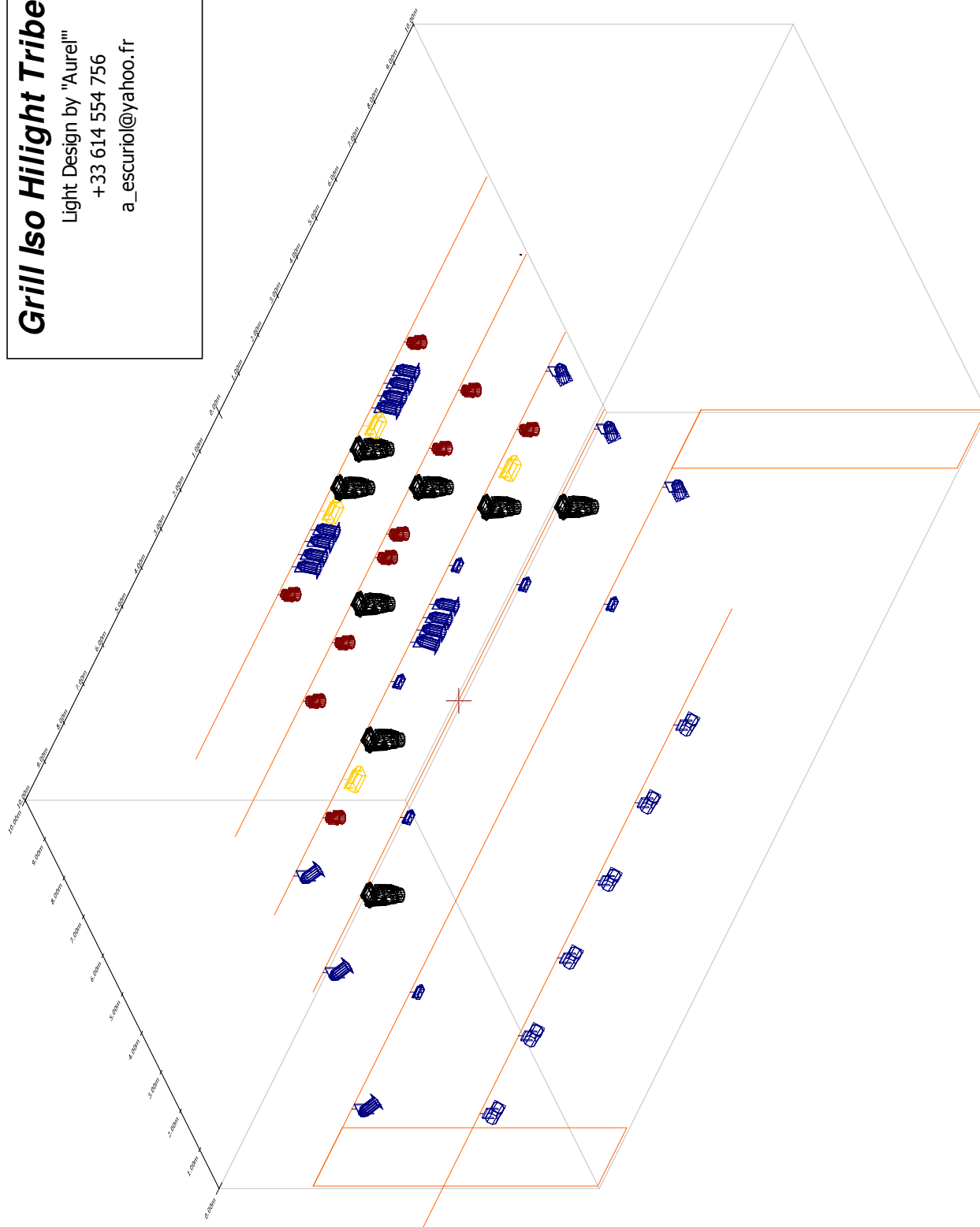
1 Full Grand MA 2 or Grand Ma 3 (or Light + Fader wing)
 Lighting desk must be at the floor, secured and centred, **facing the stage**

Grill Iso Hilight Tribe 2022

Light Design by "Aurel"

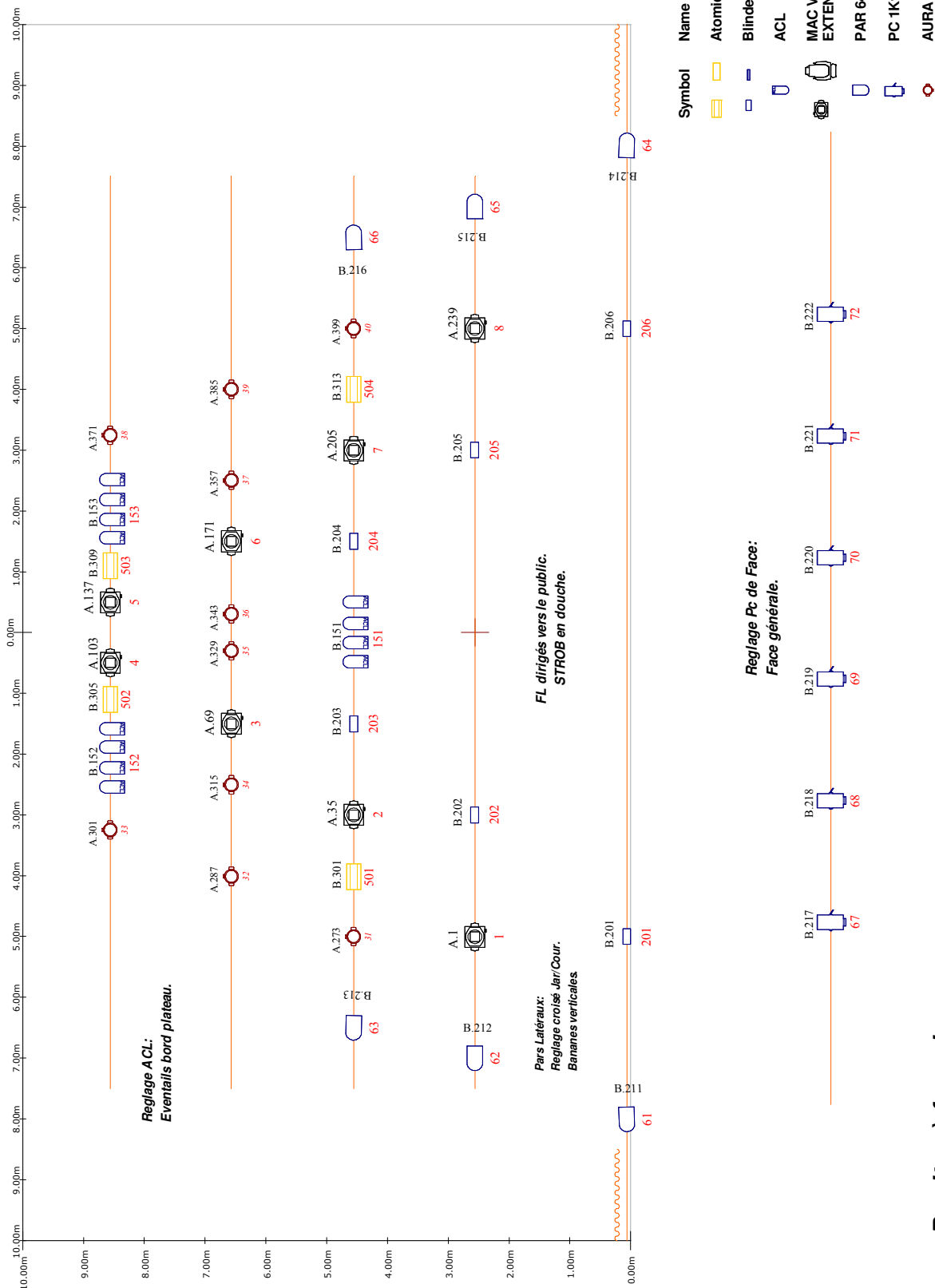
+33 614 554 756

a_escuriol@yahoo.fr



Grill Hilight Tribe 2022

Light Design by "Aurel"
+33 614 554 756
a_escuriol@yahoo.fr

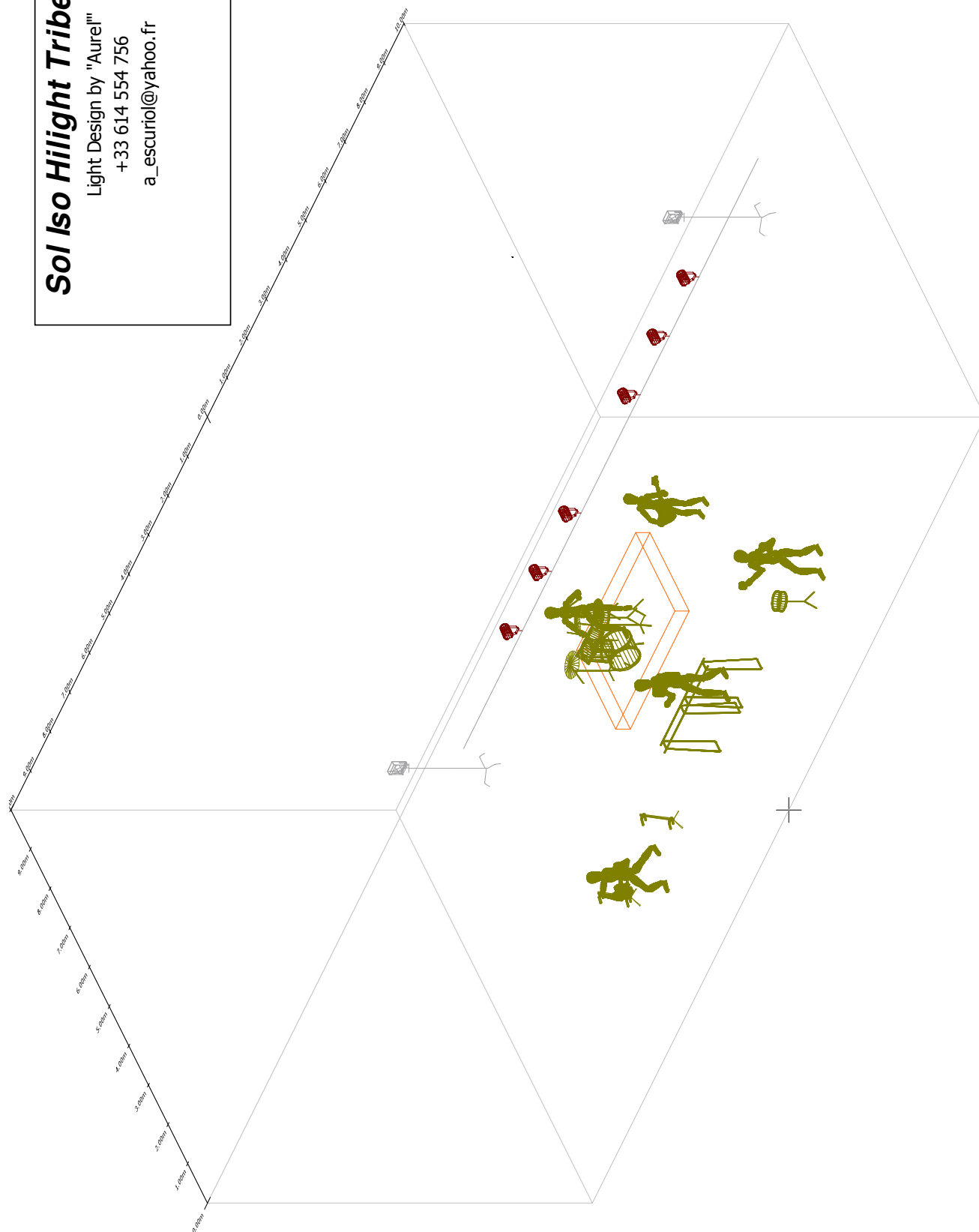


Pupitre à fournir:

Grand MA2 ou MA3 version Light Minimum.

Sol Iso Hilight Tribe 2022

Light Design by "Aurel"
+33 614 554 756
a_escuriol@yahoo.fr

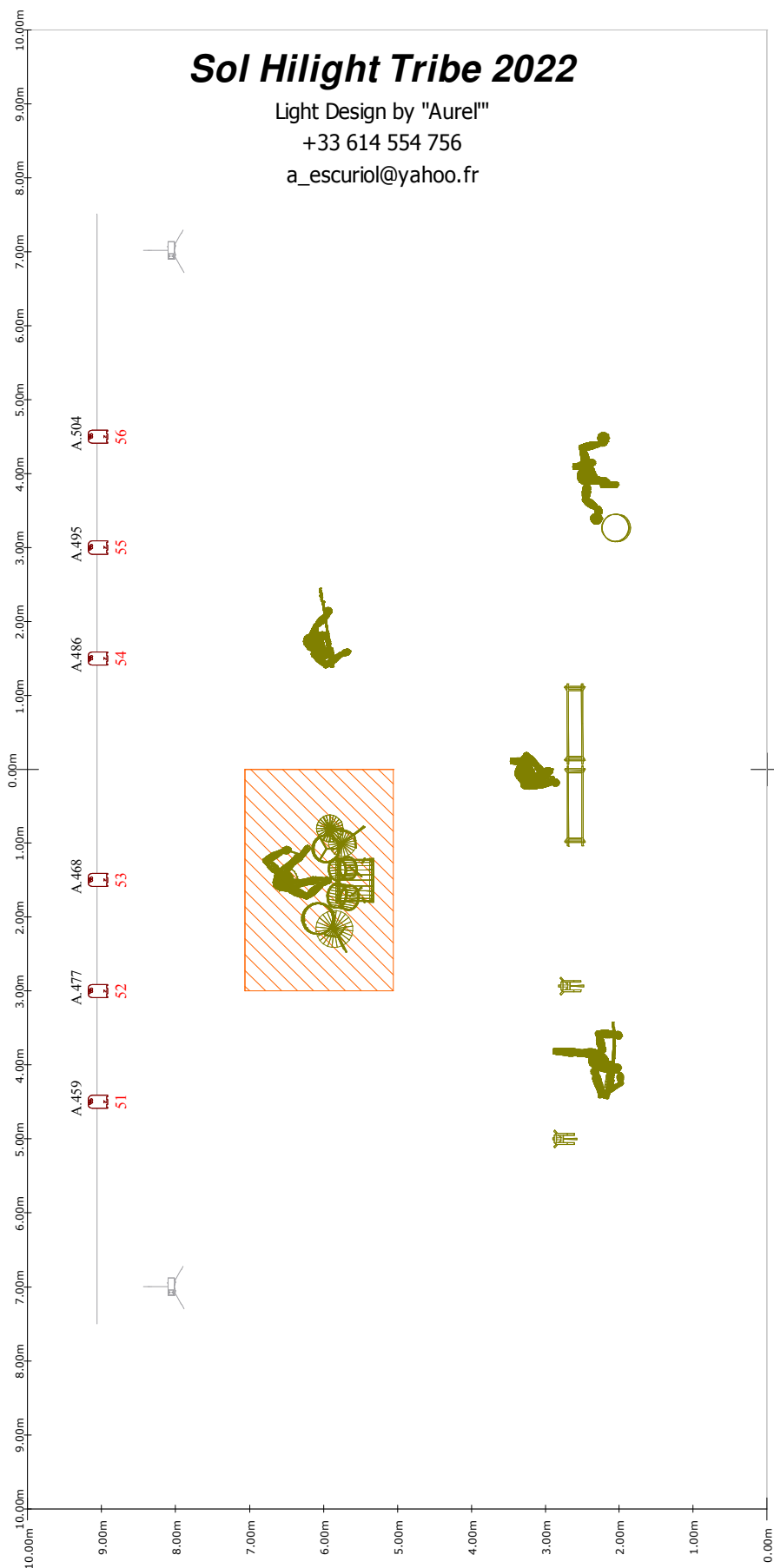




Sol Hilight Tribe 2022

Light Design by "Aurel"

+33 614 554 756

a_escuriol@yahoo.fr



| Symbol | Name | Count |
|---|----------------------|-------|
|  | Rush PAR 2 RGBW Zoom | 6 |
|  | Molefay Four Light | 2 |

HILIGHT TRIBE - HOSPITALITY

DRESSING ROOM

A lockable, quiet and comfortable room exclusively reserved for Hilight Tribe.

CATERING

| | |
|--|---|
| A cold vegetarian catering (bread / butter / cheese / vegetables) | 3 large bottles of still water |
| 1 tray of organics fresh and dry fruits | 2 sugarfree Reb Bull |
| 1 bottle of red wine | 3 large soda bottles fresh (Coca + Coca Zero + Ice tea) |
| Coffee / tea | 2 litres of Coconut Water |
| 6 cooled Corona | 6 cooled local beer |
| 2 bottles of organic fruit juice (Orange + Apple) | 6 cooled 1664 |
| | 2 litres of plant Milk |

MEALS

Important: 6 crew members are vegetarians and do not eat egg neither fish (dairy required).

10 qualitative, balanced, hot and complete meals (starter, hot dish, dessert) :

10 meals three hours before the performance (including the 6 vegetarians)

Also provide 10 sandwiches after the performance (including 6 vegetarians without eggs)

STAGE

12 small bottles of water, **2 cans of Coconut Water, 3 Gatorade or Powerade (not Redbull)**
and 6 clean towels (medium size)

ACCOMMODATION

At a minimum 3 Star hotel, close to the venue :

10 single rooms Breakfast and WIFI included

10 breakfasts + 10 lunches + 10 dinners per day